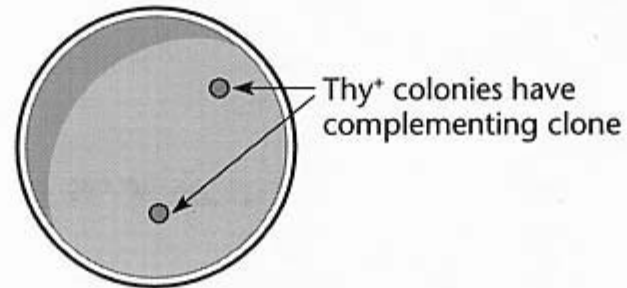


Figure 3.24

A Step 1 Transform *thyA* mutant *E. coli*
with library made from *thyA*⁺ *E. coli*

Step 2 Spread
transformed *E. coli* on
plate without thymine



Complementation
to determine
which plasmids
in library contain
the gene of
interest.

B

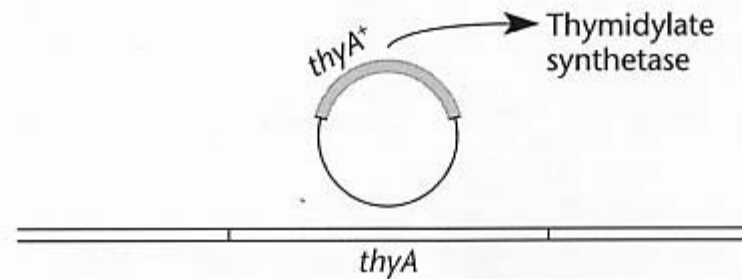
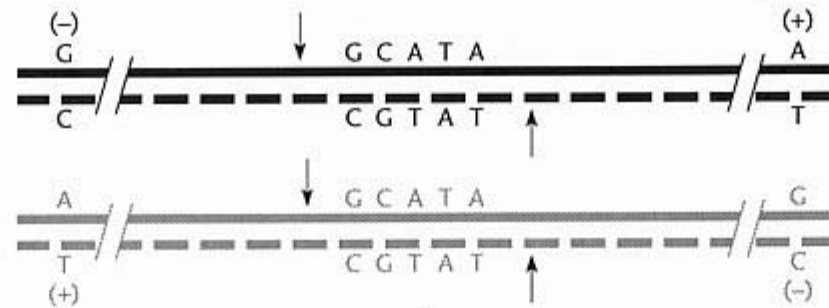
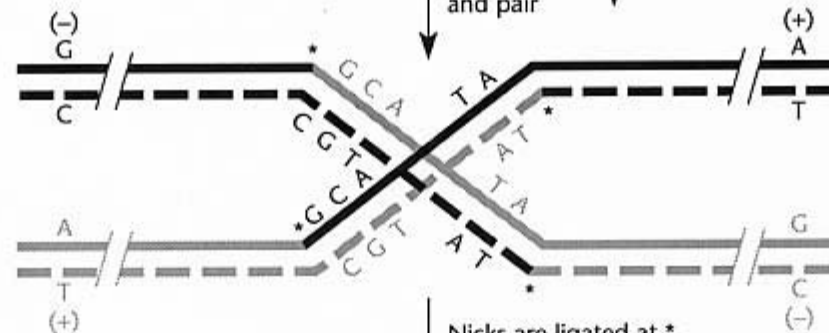


Figure 3.25

parental



DNAs break at ↓ and pair



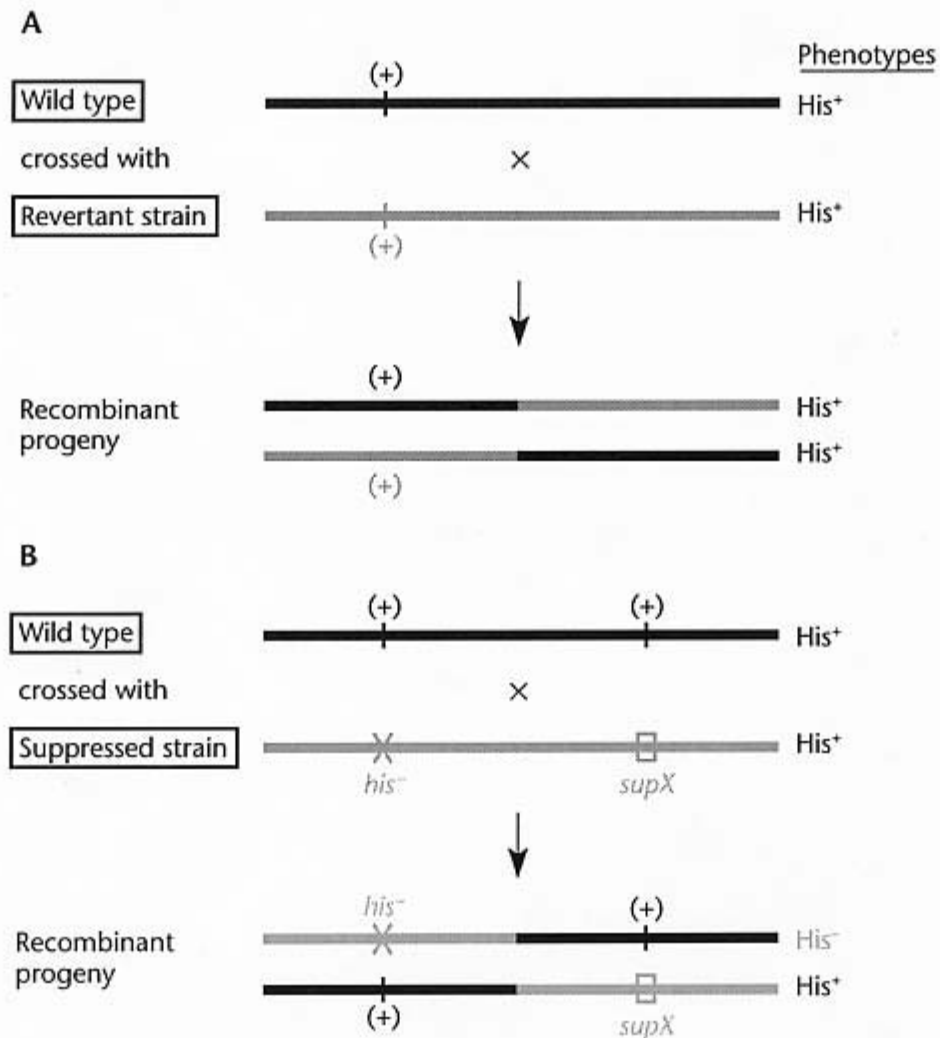
Nicks are ligated at * to form recombinant molecules

recombinant



RECOMBINATION (homologous)

Figure 3.26



Distinguishing between true revertants and pseudorevertants (suppressed mutants)

Figure 3.27

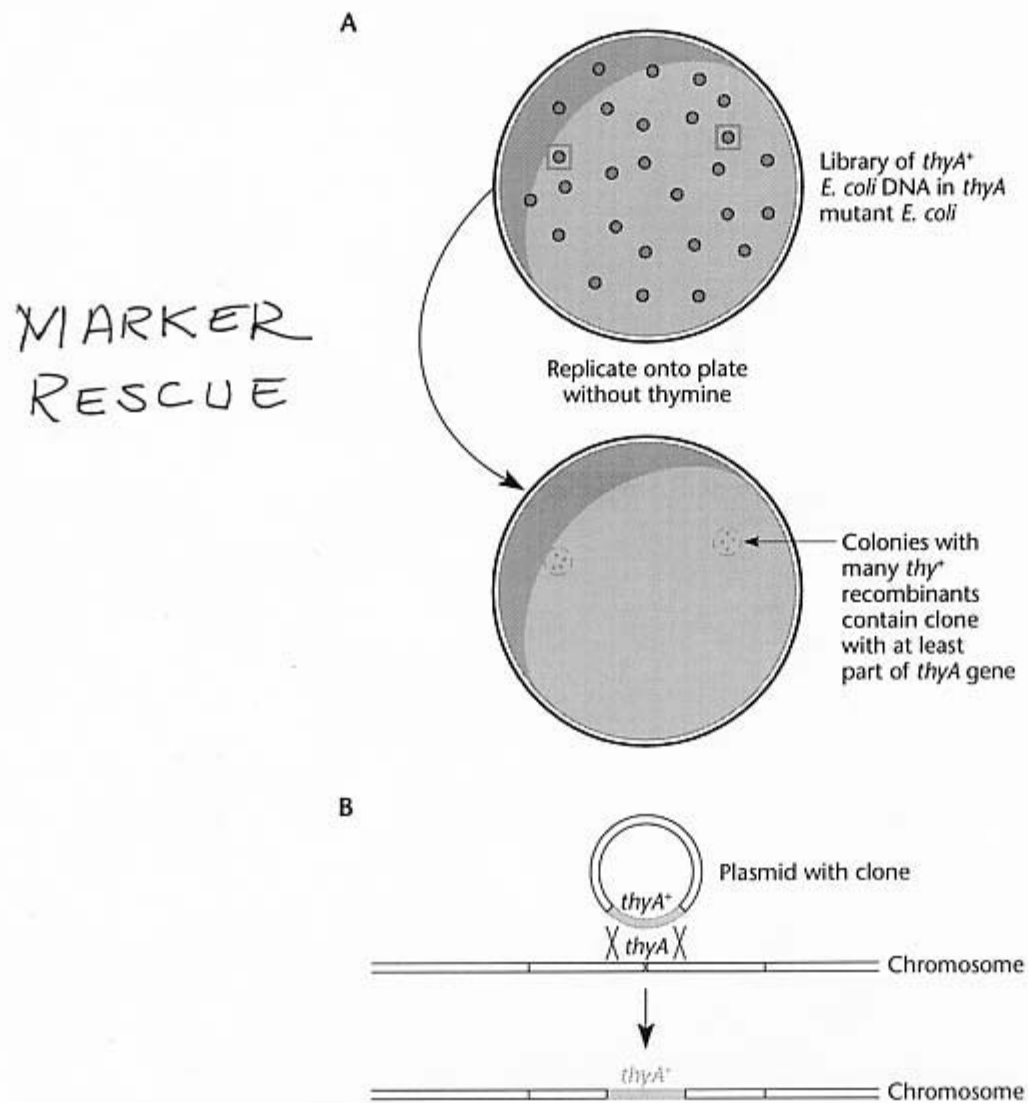


Figure 3.28

