

Genetic relationships between native and introduced populations of the little fire ant *Wasmannia auropunctata*

Alexander S. Mikheyev* and Ulrich G. Mueller

Section of Integrative Biology, University of Texas, 1 University Station C0930, Austin, TX 78712, USA

ABSTRACT

Native to much of Central and South America, the little fire ant *Wasmannia auropunctata* has been rapidly spreading throughout the world. In its introduced range, *W. auropunctata* is frequently linked with drastic reductions of ant diversity; anecdotal reports of damaging attacks on vertebrates are also common. As it poses an ever-increasing threat to biodiversity, *W. auropunctata* has emerged as a model system for the study of ecological differences between native and invasive ant populations. These studies have been hampered by a lack of information on the genetic relatedness between native and introduced populations. By investigating the genetic structure of *W. auropunctata* populations, we provide a framework for conducting phylogenetically independent tests of differences between these ants in their native and invasive ranges. Phylogenetic analyses, based on the *cox1/cox2* region of mtDNA, revealed at least three separate source populations of *W. auropunctata* distributed across two large clades. Much of the Caribbean region, presumably part of the native range, is inhabited by a clade of ants sharing very similar or identical mtDNA haplotypes, suggesting the possibility of multiple introductions or high levels of gene flow across that area. Most invasive populations in the Pacific were closely related to these ants. The invasive populations in Gabon and New Caledonia arise from another, relatively distantly related clade. Phylogenetically independent contrasts confirm McGlynn's (1999) observation that invasive *W. auropunctata* populations are smaller than native populations. Given the complex phylogeographical structure of *W. auropunctata* populations, future comparative work should correct for phylogenetic effects.

Keywords

Biological invasions, body size, cytochrome oxidase, mitochondrial DNA, PIC, phylogeography.

*Correspondence: Alexander S. Mikheyev, Section of Integrative Biology, University of Texas, 1 University Station C0930, Austin, TX 78712, USA. Tel.: 512-471-7619; Fax: 512-471-3878; E-mail: mikheyev@mail.utexas.edu

INTRODUCTION

Invasive species may seriously alter the structure of native ecosystems, carrying substantial economic and environmental costs. Ants, which drive numerous ecological processes, are a particularly destructive class of invaders, whose effects range from displacement of native fauna, to restructuring plant communities, to damaging economic infrastructure and agriculture (Holway *et al.*, 2002). At the same time, substantial progress has been made in understanding the causes of invasive ant behaviour, in part because invasive ant colonies interact with their environment through relatively easily observed worker behaviour (Mikheyev & Mueller, 2006). For example, decreases in diversity at recognition alleles accompanying ant introductions repeatedly led to decreased intraspecific aggression, creating ecologically dominant supercolonies in the invasive range (Holway *et al.*,

1998; Tsutsui *et al.*, 2001; Giraud *et al.*, 2002). Other, less understood, correlates of ant invasiveness include smaller body size and omnivory (McGlynn, 1999; Holway *et al.*, 2002). However, despite potentially complex relationships between native and invasive populations, studies of invasive ant biology rarely, if ever, use phylogenetic contrasts to evaluate the strength of their correlations. Thus, the statistical validity of such conclusions becomes difficult to evaluate.

Knowledge of genetic relationships between source and introduced populations of invasive species is crucial for understanding the biology of invasion. For instance, relationship networks between native and introduced populations can help ascertain transmission routes and modes of introduction (Amsellem *et al.*, 2000; Jousson *et al.*, 2000; Suarez *et al.*, 2001; Hanfling *et al.*, 2002; Schaffelke *et al.*, 2002). Additionally, identification of the geographical location from where an invasive species originated

allows the selection of appropriate biological control agents (Jouvenaz, 1983) and to examine ecological and evolutionary changes that accompany an invasion (Tsutsui *et al.*, 2000; Krieger & Ross, 2002; Maron *et al.*, 2004).

In cases where an invader is localized to a small geographical area, the source may be relatively clear, especially in the presence of adequate historical records (Allen *et al.*, 1974; Duncan *et al.*, 2003). However, if the native range of an invasive species covers a large area, or if there are multiple introduced populations, the elucidation of source populations requires molecular markers, especially in species with difficult taxonomy (Suarez *et al.*, 2001; Tsutsui *et al.*, 2001; Collins *et al.*, 2002; Milne & Abbott, 2004).

The little fire ant *Wasmannia auropunctata* is native to the entire Neotropical region, as well as some temperate regions, ranging from mid-Mexico and the Caribbean to northern Argentina. Over the past 100 years, *W. auropunctata* spread widely across the Pacific and into Central Africa [see table 2 in Wetterer & Porter (2003)]. It is a pest in both its native and introduced ranges, frequently harassing plantation and garden workers with its painful and irritating sting (Spencer, 1941; Fabres & Brown, 1978). Unlike the better-studied invasive ants such as the red imported fire ant *Solenopsis invicta* and the Argentine ant *Linepithema humile*, which tend to invade mainland temperate regions, *W. auropunctata* has a long history of colonizing tropical habitats, especially islands [reviewed by Holway *et al.* (2002) and Wetterer & Porter (2003)]. However, like *S. invicta* and *L. humile*, *W. auropunctata* invasions often have negative impacts on the native ant fauna (Clark *et al.*, 1982; Lubin, 1984; Jourdan, 1997; Roque-Albelo *et al.*, 2000; Le Breton *et al.*, 2003; Walker, 2006). Additionally, some reports suggest that *W. auropunctata* attacks native reptiles, birds, and mammals (Roque-Albelo & Causton, 1999; Wetterer *et al.*, 1999; Jourdan *et al.*, 2001; Walsh *et al.*, 2004). Thus, determining the source population(s) of *W. auropunctata* invasions has become increasingly important as the range of this pest continues to expand and it increasingly endangers isolated island ecosystems and protected mainland habitats.

As the threats to conservation posed by *W. auropunctata* have increased, it has also become the target of comparative studies examining similarities and differences between populations in invasive and native ranges (Le Breton *et al.*, 2004; Errard *et al.*, 2005; Fournier *et al.*, 2005a). However, over the past 100 years, *W. auropunctata* has spread widely (Holway *et al.*, 2002; Wetterer & Porter, 2003) (Fig. 1). This, coupled with the large native range, makes it difficult to assign *a priori* the source population for any of the invasions, without relying on genetic data. In order to circumvent these complications, we attempted to establish genetic relationships between invasive and native *W. auropunctata* populations using mitochondrial markers. We then demonstrated the utility of this phylogeny for investigating the evolution of invasive ant traits by conducting phylogenetically independent test of McGlynn's (1999) observation that invasive *W. auropunctata* populations are smaller in size than native populations. To the best of our knowledge, this is the first phylogenetically corrected study of trait differences between native and invasive populations in insects.

METHODS

We sampled ants from 22 sites in the native range and 10 sites in the introduced range of *W. auropunctata* (Fig. 1). Most of the samples came from sporadic collections made by large number of workers (see Acknowledgements) over the past decade and were either point-mounted or stored in alcohol. Because the relationships of the ants within each collection were unknown and likely not comparable between samples, generally only one individual from each site was sequenced.

DNA extraction and amplification

We attempted to resolve relationships among *W. auropunctata* populations by using the mtDNA region between and including parts of cytochrome oxidase subunits I and II, which includes a spacer region, as well as a t-RNA leucine sequence. Initially we attempted to amplify this region with 'universal' primers that have been successfully used by Wetterer *et al.* (1998) to amplify this sequence in *W. auropunctata*. However, amplification using the universal primer pair was unreliable, so internal *Wasmannia*-specific primers were designed based on the few successfully amplified sequences. The sequences of the primers were WaF: 5'-TANCAATTCTTATATTCATATCTGAGAAGC-3' and WaR: 5'-TTANTATGNATTCATCTGTAAGGTAAAG-3', anchored in *cox1* and *cox2*, respectively. DNA from individual workers was extracted, amplified, purified, and sequenced as in Mikheyev *et al.* (2006). The specific temperature reaction conditions involved an initial denaturing step at 94 °C for 2 min, followed by 30 cycles at 94 °C for 10 s, 60 °C for 20 s, and 72 °C for 10 s. Information from both the forward and the reverse sequences were combined to improve sequence accuracy. The sequences are deposited in GenBank under accession numbers EF409383-EF409414.

Phylogenetic analysis

An unidentified non-*auropunctata* species of *Wasmannia* from Ecuador, as well as a *Mycocarpus goeldii* sequence from GenBank (AF016017), were used as outgroups. The 10–17 bp intergenic spacer region, which could not be aligned between ingroup and outgroup taxa was eliminated from the analysis. After GTR + G was selected as the best model of evolution using MODELTEST (Posada & Crandall, 1998), phylogenies were constructed using MRBAYES (3.1.1) (Huelsenbeck & Ronquist, 2001) and GARLI (0.951) (Zwickl, 2006). The data were not partitioned into codon positions. Other than the specification of the nucleotide substitution model, all MRBAYES and GARLI parameters were left as defaults. The Bayesian analysis was run for 693 000 generations before convergence was obtained, as measured by the average standard deviation of split frequencies of four concurrent runs dropping below 0.01, and the first 50% of the generations were discarded. A phylogenetic reconstruction using the codon-based model implemented in MRBAYES was also carried out, but produced qualitatively the same results, and is not discussed here. Additionally, as traditional phylogenetic methods may not be appropriate for intraspecific genealogies (Posada



Figure 1 *Wasmannia auropunctata* native range and sampling map. The black region represents the approximate native range of *W. auropunctata*. Circles represent sites sampled for the present study.

& Crandall, 2001), we constructed a median-joining network using NETWORK 4.1 (Bandelt *et al.*, 1999).

Head width analysis

The Bayesian phylogeny was used to test, in a phylogenetically corrected framework, McGlynn's (1999) observation that invasive populations of *W. auropunctata* are smaller. Head width is correlated with body weight and other morphometric parameters and is a standard proxy for body size (Hölldobler & Wilson, 1990). Therefore, we followed McGlynn's (1999) example in using this metric for comparing interpopulation size variation. Three *W. auropunctata* workers from each of the populations included in the phylogeny (except the Cuban population, where only one worker was available) were point-mounted and their head widths were measured with an ocular micrometer. Ants were labelled as native or introduced according to the review by Wetterer & Porter (2003), except in the case of Cocos Island, Costa Rica, which likely harbours an introduced population (Solomon & Mikheyev, 2005). The analysis was performed using averages of all the workers in a population sample. Given McGlynn's (1999) previous findings that invasive ants were smaller than native ants, one-tailed *P*-values were used. A Wilcoxon signed rank test was used when comparing phylogenetically independent contrasts computed using CAIC's (2.6.9) BRUNCH algorithm (Purvis & Rambaut, 1995). A Spearman rank correlation was used to analyse phylogenetically independent contrasts obtained in PHYLIP (3.66), with the degrees of freedom reduced to account for polytomies (Purvis & Garland, 1993; Felsenstein, 1995).

RESULTS

Phylogenetic analysis

Both the Bayesian and the maximum likelihood trees gave the same overall topology (Fig. 2). The relationships between popu-

lations in the native and introduced ranges suggested that there have been at least three different source populations. Mitochondrial DNA reveals a complex genetic structure in the *W. auropunctata* populations with at least two distinct clades (Fig. 2). The two clades overlap in Brazil and in Ecuador. Aside from differences in the coding region, clade A differed from clade B by one indel in the spacer region. As seen in Fig. 3, the relationships evident in the median-joining network are largely the same as those of the traditional phylogenetic methods. Although the network shown has been generated using tolerance (ϵ) set to zero, greater values (up to three) do not substantially alter the network depicted despite increasing the number of median vectors.

Head width analysis

Introduced *W. auropunctata* population were slightly (~4%) smaller than native populations ($t_{28} = 2.7$, $P = 0.007$). In addition, the native populations were more variable in head size than the introduced populations ($F_{20,9} = 5.3$, two-tailed $P = 0.014$). Because the introduced populations were generally very closely related, and only three phylogenetically independent comparisons could be made in CAIC ($P = 0.091$), which is the lowest value obtainable using a Wilcoxon test given the sample size. Felsenstein's phylogenetically independent contrasts were significant ($N = 13$, $r_s = 0.55$, $P = 0.02$).

DISCUSSION

Both *W. auropunctata* clades (Fig. 2) have given rise to invasive populations, with at least three separate source populations being detected by the phylogenetic analysis. Lineages from clade A appear to have colonized many of the Pacific islands, whereas those from clade B invaded Gabon and New Caledonia. Cocos Island appears to have been invaded separately from the other Pacific islands. Given the Costa Rican government's repeated attempts at colonizing the island (Weston Knight, 1990), it is

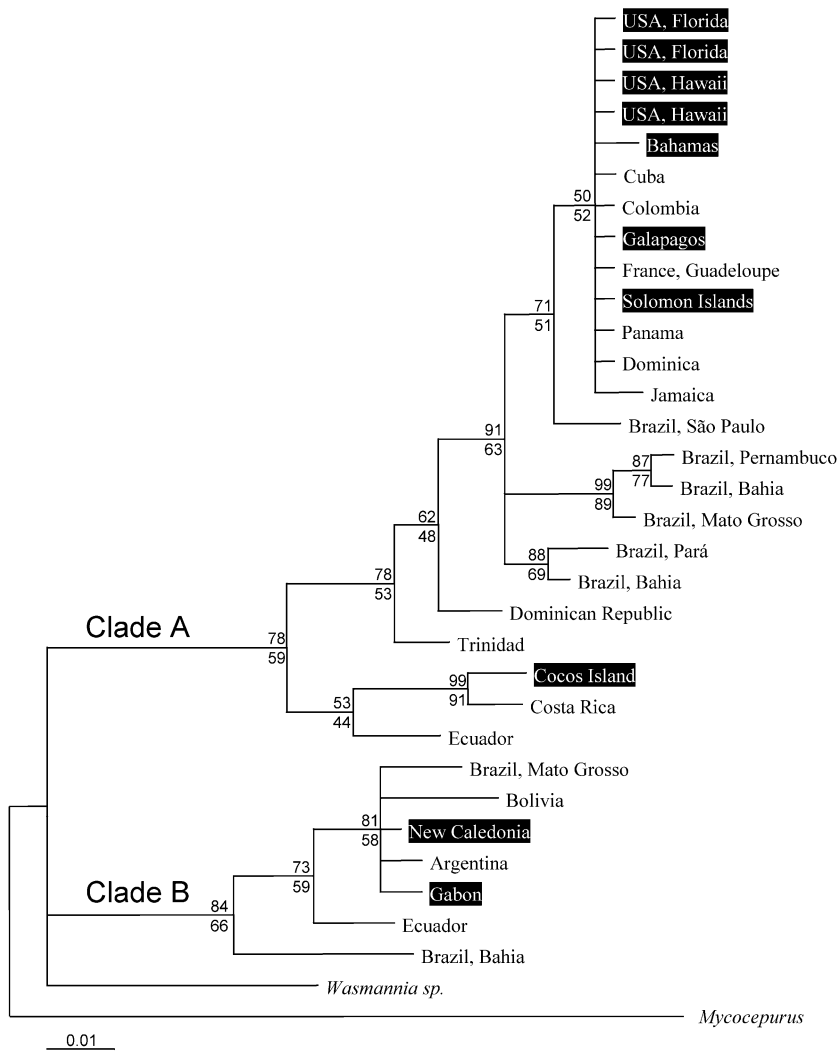


Figure 2 Bayesian tree of the phylogenetic relationships between *Wasmannia auropunctata* populations, with introduced populations highlighted in black. All nodes with > 50% support have posterior probabilities and likelihood bootstrap support values indicated, respectively, above and below the nodes. Note that the branch length of the *Mycocepurus* outgroup is not to scale.

likely that the source population originated from the Costa Rican mainland (Solomon & Mikheyev, 2005), which is also suggested by phylogenetic patterns (Fig. 2). The distribution of invasive populations from clade B, in Gabon and New Caledonia, is puzzling given that most all other Pacific islands have been colonized by the Caribbean clade. Both Gabon and New Caledonia are former colonies of France and likely have been historically linked through trade. Possibly, the relatively recent New Caledonian population arose from the older Gabonese population (Wetterer & Porter, 2003).

The existence of multiple introductions and the probable extensive transport of ants between invasive populations strongly imply that multiple introductions to any site might be responsible, as has been the case for the red imported fire ant (Ross & Fletcher, 1985), and invasive species in general (Sakai *et al.*, 2001). Growing evidence suggests that interspecific hybridization may occasionally produce highly competitive invasive hybrids (Ellstrand & Schierenbeck, 2000). Together with extensive ant transport, the existence of two clades of *W. auropunctata*, possibly representing two different species in the native range, makes interspecific hybridization in the invasive range also a distinct possibility.

Curiously, the unresolved clade that occupies many of the Caribbean islands and surrounding area is more closely related to ants of the Brazilian mainland than to ants from the Dominican Republic and Trinidad. The presence of closely related populations of *W. auropunctata* throughout the Caribbean region suggests the possibility of recent multiple introductions, perhaps from a Brazilian source. Alternatively, ancestral Dominican and Trinidadian populations may have been replaced by recent introductions from elsewhere. Such introductions may have either displaced or hybridized with native *W. auropunctata* populations, just as the introduction of Africanized honey bees has largely supplanted European mtDNA haplotypes in the New World (Clarke *et al.*, 2001). Given that *W. auropunctata* disperse slowly without human aid (Walsh *et al.*, 2004; Walker, 2006), the possibility that the Caribbean region enjoyed naturally high levels of genetic exchange and that the Dominican Republic and Trinidad were independently colonized from other mainland sources appears less likely. A detailed genetic study with highly polymorphic markers, such as microsatellite markers developed for this species (Fournier *et al.*, 2005b), may help resolve the two possibilities by elucidating fine-scale differences and similarities between the Caribbean populations.

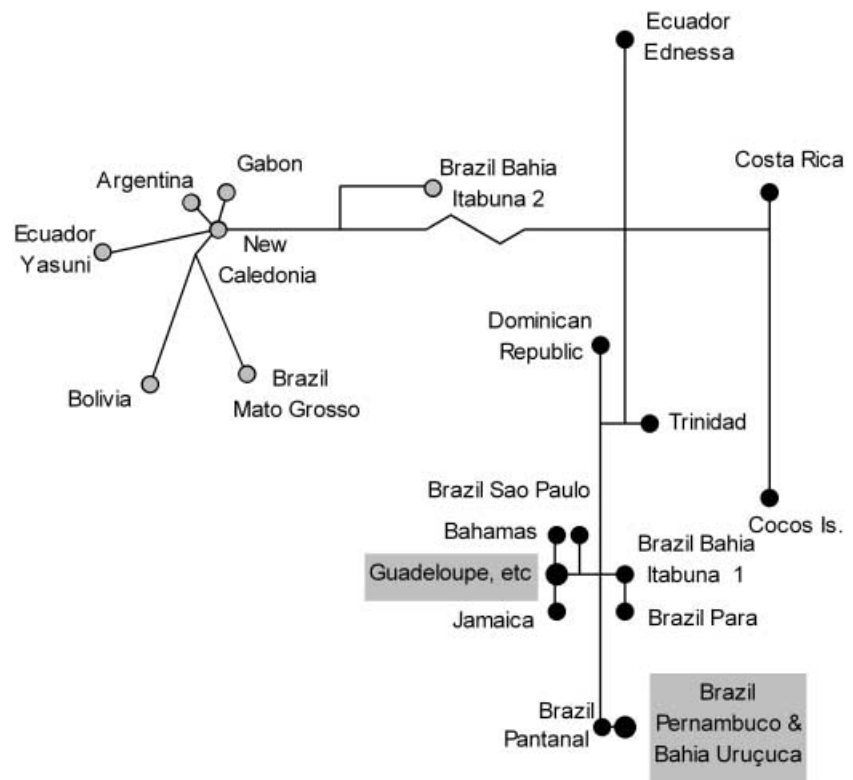


Figure 3 Median-joining network of the *Wasmannia auropunctata* populations. The length of the edges joining nodes is proportional to the number mutations between them, except in the case of the edge joining clades A (grey) and B (black), which has been scaled down by a factor of 2.5. Median vectors lie at the unlabelled junctions of the edges. Two of the nodes (grey underlay) represent more than one population. Specifically, the node 'Guadeloupe, etc.' also encompasses Cuba, Dominica, Florida, Galápagos, Hawaii, Panama, and the Solomon Islands.

The complex phylogeographical structure of *W. auropunctata* populations means that phylogenetic correction is essential for making meaningful comparisons between native and invasive populations. As several source populations exist (Figs 2 and 3), one cannot arbitrarily assume that a population within the native range is necessarily closely related to any given invasive population. Also, given the genetic diversity of *W. auropunctata* lineages that occur in the native range, and the virtual impossibility of elucidating the exact source of any introduced population, studies considering only a single source and a single invasive population may underestimate the range of variation present in the native range, with the possibility of drawing incorrect conclusions. By showing the patterns of genetic variation and relatedness in native and invasive populations, our work allows for the design of future, more rigorous, phylogenetically controlled studies.

Although we have shown that McGlynn's (1999) observation that invasive *W. auropunctata* populations have smaller workers than those in the native range holds after phylogenetic correction, the reason for this phenomenon remains unclear. McGlynn suggested that differences in size may be linked to fighting ability, by decreasing colony investment per individual worker, possibly accelerating colony growth. Alternatively, the worker size differences may be correlated with life-history differences, such as higher levels of polygyny in the introduced range (McGlynn, 1999). The reason for worker size differences between native and invasive populations remains to a large extent unclear. However, given the apparent prevalence of the pattern, it may reflect important general differences in selective pressures on ants in their native and invasive ranges.

Although the large native range and multiple sites of introduction make *W. auropunctata* a challenging study system, these same features make it an interesting case study for invasion biology. Its tendency to colonize isolated islands allows for natural replication of invasion events, provided that the invasion history can be phylogenetically accounted for. Likewise, the multiple origins of the invasion provide an opportunity to examine parallel changes in invasive populations. Finally, more work is needed to understand why only a few of the populations in *W. auropunctata*'s large native range appear to have become invasive. The global range of *W. auropunctata* has greatly expanded in the past several decades (Wetterer & Porter, 2003) and the number of introduced population will likely only continue to increase. The present phylogenetic framework supplies the foundation to understand these novel introductions and to help combat the future spread of this damaging ant.

ACKNOWLEDGEMENTS

We are grateful to RMM Adams, LE Alonso, C Causton, C Darst, M Deyrup, D Gruner, E Guilbert, HW Rogg, TR Schultz, AV Suarez, and JK Wetterer for providing specimens used in this study. We would also like to thank A McCoy for suggesting the extraction procedure. The manuscript has been greatly improved by comments from AV Suarez, ND Tsutsui, and JK Wetterer and two anonymous reviewers. Funding for this project has been provided by NSF-CAREER grant DEB-9983879 (UGM), as well as grants from the University of Texas and fellowships from the Dolores Zohrab Liebmann Foundation and the US Environmental

Protection Agency (ASM). Additional funding for this work has been provided by NSF DDIG grant DEB-0508613 to ASM.

REFERENCES

- Allen, G.E., Buren, W.F., Williams, R.N., De Menezes, M. & Whitcomb, W.H. (1974) The red imported fire ant, *Solenopsis invicta*; distribution and habitat in Mato Grosso, Brazil. *Annals of the Entomological Society of America*, **67**, 43–46.
- Amsellem, L., Noyer, J.L., Le Bourgeois, T. & Hossaert-Mckey, M. (2000) Comparison of genetic diversity of the invasive weed *Rubus alceifolius* Poir. (Rosaceae) in its native range and in areas of introduction, using amplified fragment length polymorphism (AFLP) markers. *Molecular Ecology*, **9**, 443–455.
- Bandelt, H.-J., Forster, P. & Rohl, A. (1999) Median-joining networks for inferring intraspecific phylogenies. *Molecular Biology and Evolution*, **16**, 37–48.
- Clark, D.B., Guayasamin, C., Pazmico, O., Donoso, C. & Páez De Villachs, Y. (1982) The tramp ant *Wasmannia auropunctata*: autecology and effects on ant diversity and distribution on Santa Cruz Island, Galapagos. *Biotropica*, **14**, 196–207.
- Clarke, K.E., Oldroyd, B.P., Javier, J., Quezada-Euan, G. & Rinderer, T.E. (2001) Origin of honeybees (*Apis mellifera* L.) from the Yucatan peninsula inferred from mitochondrial DNA analysis. *Molecular Ecology*, **10**, 1347–1355.
- Collins, T.M., Trexler, J.C., Nico, L.G. & Rawlings, T.A. (2002) Genetic diversity in a morphologically conservative invasive taxon: multiple introductions of swamp eels to the Southeastern United States. *Conservation Biology*, **16**, 1024–1035.
- Duncan, R.P., Blackburn, T.M. & Sol, D. (2003) The ecology of bird introductions. *Annual Review of Ecology and Systematics*, **34**, 71–98.
- Ellstrand, N.C. & Schierenbeck, K.A. (2000) Hybridization as a stimulus for the evolution of invasiveness in plants? *Proceedings of the National Academy of Sciences USA*, **97**, 7043–7050.
- Errard, C., Delabie, J., Jourdan, H. & Hefetz, A. (2005) Intercontinental chemical variation in the invasive ant *Wasmannia auropunctata* (Roger) (Hymenoptera Formicidae): a key to the invasive success of a tramp species. *Naturwissenschaften*, **92**, 319–323.
- Fabres, G. & Brown, W.L. Jr (1978) The recent introduction of the pest ant *Wasmannia auropunctata* into New Caledonia. *Journal of the Australian Entomological Society*, **17**, 139–142.
- Felsenstein, J. (1995) *PHYLIP (hylogeny inference package)*, Version 3.57 c. Department of Genetics, University of Washington, Seattle, Washington.
- Fournier, D., Estoup, A., Orivel, J., Foucaud, J., Jourdan, H., Le Breton, J. & Keller, L. (2005a) Clonal reproduction by males and females in the little fire ant. *Nature*, **435**, 1167–1168.
- Fournier, D., Foucaud, J., Loiseau, A., Cros-Arteil, S., Jourdan, H., Orivel, J., Le Breton, J., Chazeau, J., Dejean, A., Keller, L. & Estoup, A. (2005b) Characterization and PCR multiplexing of polymorphic microsatellite loci for the invasive ant *Wasmannia auropunctata*. *Molecular Ecology Notes*, **5**, 239–242.
- Giraud, T., Pedersen, J.S. & Keller, L. (2002) Evolution of supercolonies: The Argentine ants of southern Europe. *Proceedings of the National Academy of Sciences USA*, **99**, 6075–6079.
- Hanfling, B., Carvalho, G.R. & Brandl, R. (2002) mt-DNA sequences and possible invasion pathways of the Chinese mitten crab. *Marine Ecology-Progress Series*, **238**, 307–310.
- Hölldobler, B. & Wilson, E.O. (1990) *The ants*. Harvard University Press, Cambridge, Massachusetts.
- Holway, D.A., Lach, L., Suarez, A.V. & Tsutsui, N.D. (2002) The causes and consequences of ant invasions. *Annual Review of Ecology and Systematics*, **33**, 181–233.
- Holway, D.A., Suarez, A.V. & Case, T.J. (1998) Loss of intraspecific aggression in the success of a widespread invasive social insect. *Science*, **282**, 949–952.
- Huelsenbeck, J.P. & Ronquist, F. (2001) MRBAYES: Bayesian inference of phylogenetic trees. *Bioinformatics*, **17**, 754–755.
- Jourdan, H. (1997) Threats on Pacific islands: the spread of the tramp ant *Wasmannia auropunctata* (Hymenoptera: Formicidae). *Pacific Conservation Biology*, **3**, 61–64.
- Jourdan, H., Sadler, R.A. & Bauer, A.M. (2001) Little fire ant invasion (*Wasmannia auropunctata*) as a threat to New Caledonian lizards: evidence from a Sclerophyll Forest (Hymenoptera: Formicidae). *Sociobiology*, **38**, 283–301.
- Jousson, O., Pawlowski, J., Zaninetti, L., Zechman, F.W., Dini, F., Di Guiseppe, G., Woodfield, R., Millar, A. & Meinesz, A. (2000) Invasive alga reaches California. *Nature*, **408**, 157–158.
- Jouvenaz, D.P. (1983) Natural enemies of fire ants. *Florida Entomologist*, **66**, 111–121.
- Krieger, M.J.B. & Ross, K.G. (2002) Identification of a major gene regulating complex social behavior. *Science*, **295**, 328–332.
- Le Breton, J., Chazeau, J. & Jourdan, H. (2003) Immediate impacts of invasion by *Wasmannia auropunctata* (Hymenoptera: Formicidae) on native litter ant fauna in a New Caledonian rainforest. *Austral Ecology*, **28**, 204–209.
- Le Breton, J., Delabie, J.H.C., Chazeau, J., Dejean, A. & Jourdan, H. (2004) Experimental evidence of large-scale unicolonality in the tramp ant *Wasmannia auropunctata*. *Journal of Insect Behavior*, **17**, 263–271.
- Lubin, Y.D. (1984) Changes in the native fauna of the Galápagos Islands following invasion by the little red fire ant, *Wasmannia auropunctata*. *Biological Journal of the Linnean Society*, **21**, 229–242.
- Maron, J.L., Vila, M., Bommarco, R., Elmendorf, S. & Beardsley, P. (2004) Rapid evolution of an invasive plant. *Ecological Monographs*, **74**, 261–280.
- McGlynn, T.P. (1999) Non-native ants are smaller than related native ants. *The American Naturalist*, **154**, 690–699.
- Mikheyev, A.S. & Mueller, U.G. (2006) Invasive species: customs intercepts reveal what makes a good ant stowaway. *Current Biology*, **16**, R129–R131.
- Mikheyev, A.S., Mueller, U.G. & Abbot, P. (2006) Cryptic sex and many-to-one coevolution in the fungus-growing ant symbiosis. *Proceedings of the National Academy of Sciences USA*, **103**, 10702–10706.
- Milne, R.I. & Abbott, R.J. (2004) Geographic origin and taxonomic status of the invasive Privet, *Ligustrum robustum*

- (Oleaceae), in the Mascarene Islands, determined by chloroplast DNA and RAPDs. *Heredity*, **92**, 78–87.
- Posada, D. & Crandall, K.A. (1998) MODELTEST: testing the model of DNA substitution. *Bioinformatics*, **14**, 817–818.
- Posada, D. & Crandall, K.A. (2001) Intraspecific gene genealogies: trees grafting into networks. *Trends in Ecology & Evolution*, **16**, 37–45.
- Purvis, A. & Garland, T.J.R. (1993) Polytomies in comparative analyses of continuous characters. *Systematic Biology*, **42**, 569–575.
- Purvis, A. & Rambaut, A. (1995) Comparative analysis by independent contrasts (CAIC): an Apple Macintosh application for analyzing comparative data. *CABOIS*, **11**, 247–251.
- Roque-Albelo, L. & Causton, C. (1999) El Niño and introduced insects in the Galapagos Islands: different dispersal strategies, similar effects. *Noticias de Galapagos*, **60**, 30–36.
- Roque-Albelo, L., Causton, C.E. & Mieleles, A. (2000) The ants of Marchena Island, twelve years after the introduction of the little fire ant *Wasmannia auropunctata*. *Noticias de Galapagos*, **61**, 17–20.
- Ross, K.G. & Fletcher, D.J.C. (1985) Genetic origin of male diploidy in the fire ant, *Solenopsis invicta* (Hymenoptera: Formicidae), and its evolutionary significance. *Evolution*, **39**, 888–903.
- Sakai, A.K., Allendorf, F.W., Holt, J.S., Lodge, D.M., Molofsky, J., With, K.A., Baughman, S., Cabin, R.J., Cohen, J.E., Ellstrand, N.C., Mccauley, D.E., O'neil, P., Parker, I.M., Thompson, J.N. & Weller, S.G. (2001) The population biology of invasive species. *Annual Review of Ecology and Systematics*, **32**, 305–332.
- Schaffelke, B., Murphy, N. & Uthicke, S. (2002) Using genetic techniques to investigate the sources of the invasive alga *Caulerpa taxifolia* in three new locations in Australia. *Marine Pollution Bulletin*, **44**, 204–210.
- Solomon, S.E. & Mikheyev, A.S. (2005) The ant (Hymenoptera: Formicidae) fauna of Cocos Island, Costa Rica. *Florida Entomologist*, **88**.
- Spencer, H. (1941) The small fire ant *Wasmannia* in citrus groves — A preliminary report. *Florida Entomologist*, **24**, 6–14.
- Suarez, A.V., Holway, D.A. & Case, T.J. (2001) Patterns of spread in biological invasions dominated by long-distance jump dispersal: Insights from Argentine ants. *Proceedings of the National Academy of Sciences USA*, **98**, 1095–1100.
- Tsutsui, N.D., Suarez, A.V., Holway, D.A. & Case, T.J. (2000) Reduced genetic variation and the success of an invasive species. *Proceedings of the National Academy of Sciences USA*, **97**, 5948–5959.
- Tsutsui, N.D., Suarez, A.V., Holway, D.A. & Case, T.J. (2001) Relationships among native and introduced populations of the Argentine ant (*Linepithema humile*) and the source of introduced populations. *Molecular Ecology*, **10**, 2151–2161.
- Walker, K.L. (2006) Impact of the little fire ant, *Wasmannia auropunctata*, on native forest ants in Gabon. *Biotropica*, **38**, 666–673.
- Walsh, P.D., Henschel, P. & Abernathy, K.A. (2004) Logging speeds little red fire ant invasion of Africa. *Biotropica*, **36**, 637–641.
- Weston Knight, J.C. (1990) *Cocos Island*. Imprenta y Litografía Trejos, San Jose, Costa Rica.
- Wetterer, J.K. & Porter, S.D. (2003) The little fire ant *Wasmannia auropunctata*: distribution, impact and control. *Sociobiology*, **42**, 1–41.
- Wetterer, J.K., Schultz, T.R. & Meier, R. (1998) Phylogeny of fungus-growing ants (Tribe Attini) based on mtDNA sequence and morphology. *Molecular Phylogenetics and Evolution*, **9**, 42–47.
- Wetterer, J.K., Walsh, P.D. & White, L.J.T. (1999) *Wasmannia auropunctata*, a highly destructive tramp ant, in wildlife refuges of Gabon, West Africa. *African Entomology*, **7**, 292–294.
- Zwickl, D.J. (2006) Genetic algorithm approaches for the phylogenetic analysis of large biological sequence datasets under the maximum likelihood criterion. PhD Thesis. University of Texas, Austin, Texas.

Copyright of Diversity & Distributions is the property of Blackwell Publishing Limited and its content may not be copied or emailed to multiple sites or posted to a listserv without the copyright holder's express written permission. However, users may print, download, or email articles for individual use.